



Rail-Free ballasted flat mounting system

Best price value available, Q235 steel

- No drilling or digging, without roof penetration.
- EPDM mats offer additional protection for the roof.
- Only four major components , railless design.
- End and inter clamp compatible.

Mounting Tilt

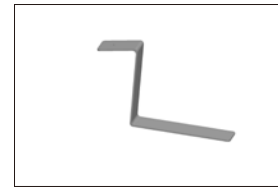
5° / 10°

Inter-Row Spacing

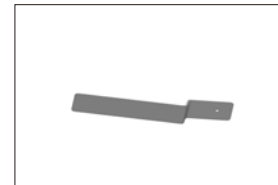
400mm(Recommended)

Features

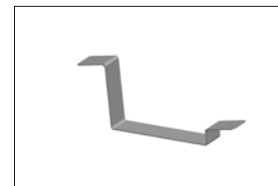
Install site	Flat roof, landfill, open terrain
Tilt angle	5°, 10°
Building height	Up to 24m
Wind speed	Up to 60m/s(216kmh/133mph)
Snow load	Up to 99cm
Standard	AS/NZ1170.2:2011, JIS C 8955:2011, other international standards
Inter-row spacing	400mm recommended
PV module	Framed, unframed
Module orientation	Landscape recommended
Size of module array	Any layout up to site condition
Material	Q235 steel, stainless steel 304, AL6005-T6
Color	Natural, powder coated
Module widths	Maximum 1.0m
Module lengths	Maximum 2.0m
Warranty	10 years limited warranty, refer to warranty doc



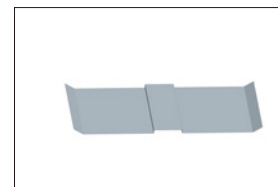
Rear support



Front support

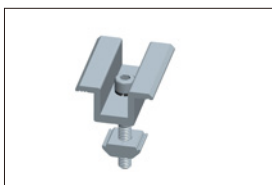


Inter support



Ballast tray

- Wind shield optional.
All profiles are available in various lengths or can be cut to measure.



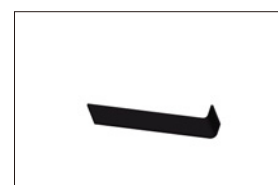
Clamp



Buckle



Protection mat(Inter)



Protection mat(Front and Rear)



Flat roof



10
Years
Warranty



Framed module



Unframed module



Orientation landscape



Orientation portrait

