

Railless metal sheet mounting system

Light, small, cost-effective and easy mounting on trapezoidal sheet

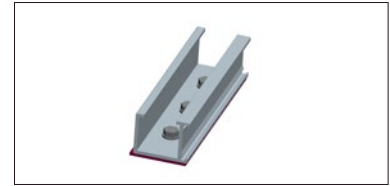
- The system contains only four components.
- Rail-free facilitates the installation and saves time.
- The EPDM sheet is in the package to seal the screw against the metal sheet.
- Base mountings clip is 100mm or 140mm long, easy to attach on trapezoidal roofs.



Capacity: 1MW Location: Japan

Features

Install site	Trapezoidal metal sheet, sandwich roofing, standing seam roofs
Min. sheet thickness	0.8mm minimum
Roof slope	Up to 12°
Building height	Up to 20m
Wind speed	Up to 60m/s(216kmh/133mph)
Standard	AS/NZ1170.2:2011, JIS C 8955:2011, other international standards
Distance between footings	Depending on load condition, refer to manual
PV module	Framed
Module orientation	Landscape, portrait
Size of module array	Any layout up to site condition
Material	Anodized aluminum 6005 T5, stainless steel 304, 410
Color	Natural, powder coated
Module widths	Maximum 1.0m
Module lengths	Maximum 2.0m
Warranty	10 years limited warranty, refer to warranty doc



Roof attachment

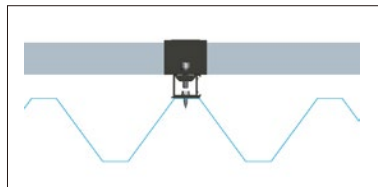


End Clamp

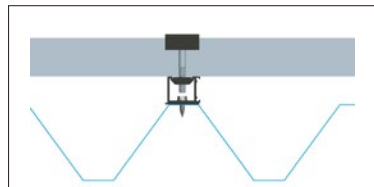


Inter Clamp

- Roof structure to be checked as suitable before installation.



Side view



Side view



Top view



Flat roof



Pitched roof



10
Years
Warranty



Framed module



Unframed module



Orientation landscape



Orientation portrait

